



# ThinkLite®

WACHSEN GROWLITE, BY THINKLITE



**WACHSEN**  
ENGINEERING

## REACH NEW HEIGHTS



KEY SOLUTIONS  
GROUP

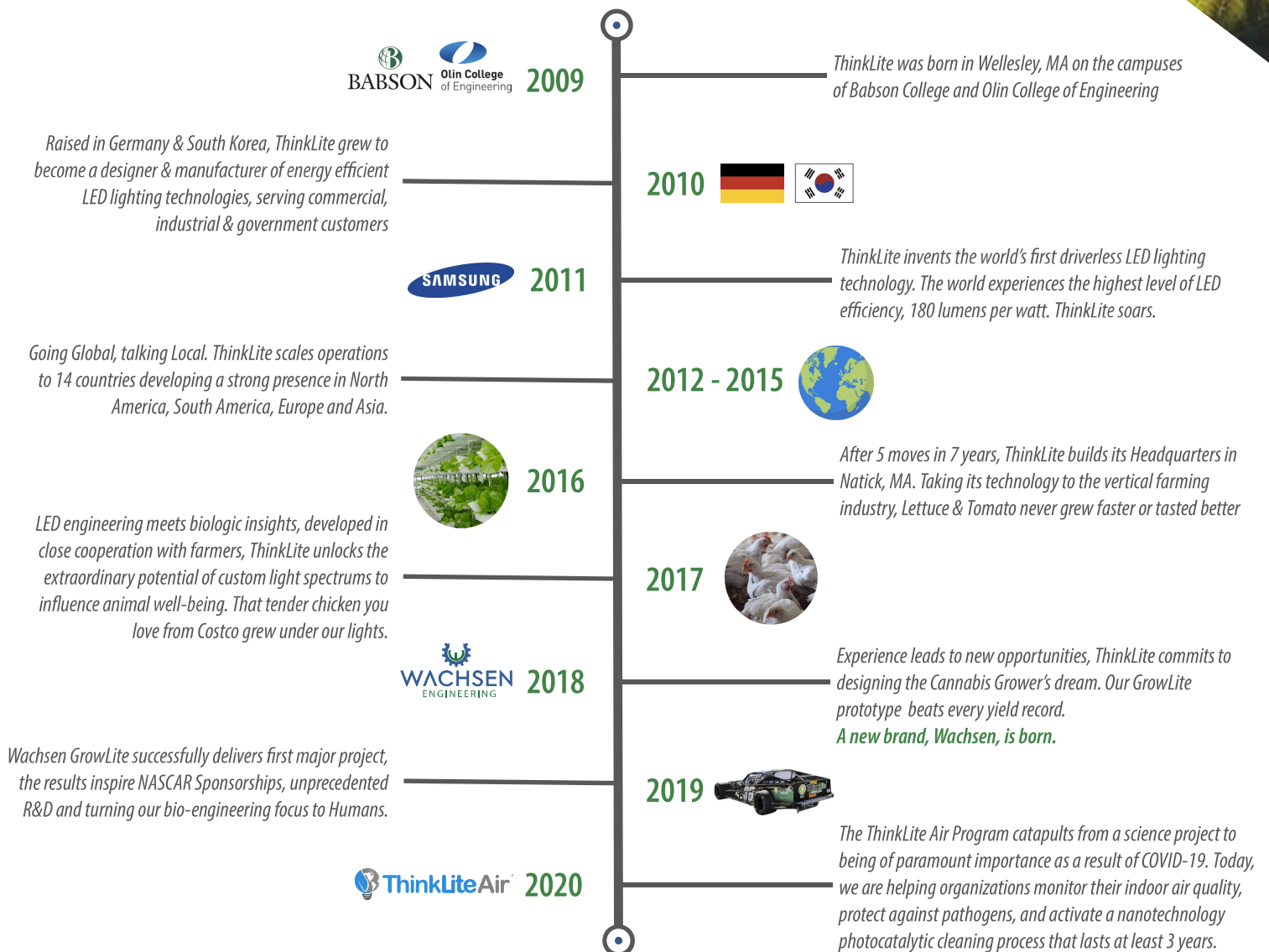
116 1st Avenue, North,  
Suite D PO Box 94 Altoona,  
IA 50009  
515-802-2761

[www.KSG-Corp.com](http://www.KSG-Corp.com) | [Wachsen@ThinkLite.com](mailto:Wachsen@ThinkLite.com)

# OVER A DECADE IN THE MAKING

THERE ARE MANY YOUNG LED COMPANIES ON THE BLOCK TRYING TO TAKE A CHIP AT THE CANNABIS INDUSTRY.

AND THEN, THERE IS US.  
LET OUR HISTORY SHED SOME LIGHT



# AWARDS



Most Innovative Startups in Boston - 2010



Top Disruptive Technologies in the USA - 2011



Most Promising Leaders of the Future - 2011



White House Award for Leader in Sustainable Entrepreneurship in the USA - 2013



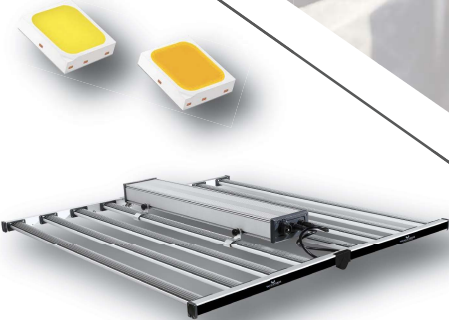
#34 on America's Fastest Growing 5000 Companies - 2017



MA State Gov Baker Award for Top Immigrant Entrepreneur in MA - 2017

## WHY WACHSEN?

Wachsen is the German word for "Consistently Growing". That's how it all started, 'Project Wachsen' was the internal reference coined by our team of engineers in Munich, Germany. When the time came to carve out our bio-engineered lighting solutions as a separate brand, Wachsen Engineering just felt right. It defined what we had done all along – optimally steer lighting so plants and animals do not experience unnecessary stress and therefore grow easier, quicker and better. It also defined what we strive for as a company and in life, to Consistently Grow.



WACHSEN GROWLITE, BY THINKLITE



## EVERY DETAIL DESIGNED WITH THE GROWER IN MIND

Our components, right down to the LED chip are custom manufactured for us. We've had a long-standing relationship with Samsung since the invention of our driverless technology that enables this level of modification. Leveraging our proprietary technologies and experience from the past decade, with valuable input from master growers around the world, the Wachsen GrowLite is engineered to be the grower's ultimate dream. That was the very question with which this journey began - "What does your Christmas morning Grow light look like?"

Lifetime: 70,000 hours  
Warranty: 7 years standard warranty

The Wachsen GrowLite is a full spectrum, full cycle growing solution for Mothers, Clones, Veg, and Flowering phases of the cannabis plant.



## Intense Uniformity

There is no even 5ft x 5ft footprint like the Wachsen GrowLite does. Each light measures approximately 4ft x 4ft, but the juice is in the details. Our innovative engineering generates more useful light for your plants with less radiant heat, achieving:

- Efficacy: 2.9 umol/J
- PPF: 1,900 umol/s
- Power Factor: >98%

Don't just go off the specs, these are the yields you can expect:

- *Avg Lbs/plant: 2.5-3.5 lbs, with ease*
- *Avg grams /sqft: 65+ grams/sqft*
- Breath taking Potency and Aroma



## Fully Waterproof

Not a single exposed LED diode on our lights. Yes, the efficacy and PPF output the Wachsen GrowLite delivers is with a lens, thanks to our expertise in Optics engineering. No more cleaning your lights with a thousand cotton swabs, no more micro fiber from your fine cloths sticking to your lights, and no more dirt collecting on your LEDs, becoming a risk for imperfect grows.

- Simply wipe or spray down
- IP67 rated

This means:

- Hundreds of hours per year in turning around rooms from harvest to harvest, **SAVED!**
- *Reach New Heights with 6 to 7 harvests per year, you probably know what to expect from each harvest, do the math, it's exciting!*



## Heat. Or the lack of it.

Much of our IP is around effective thermal management. It is indeed the back bone of our proprietary technologies since the start. This is why the ThinkLite Wachsen GrowLite assures a constant low temperature throughout the grow cycle, regardless of whether your lights are on for 6 hours, 18 hours, or days on a stretch. No fluctuations in the operating temperature, no over heating, just constant reliable performance you can count on.

- Mounting Height > 4 inches above Canopy
- Maximum Operating temperature: 80 F°

*"These lights just do not get hot. I have not seen anything like it. We are saving over \$1 million in HVAC costs this year alone!"*

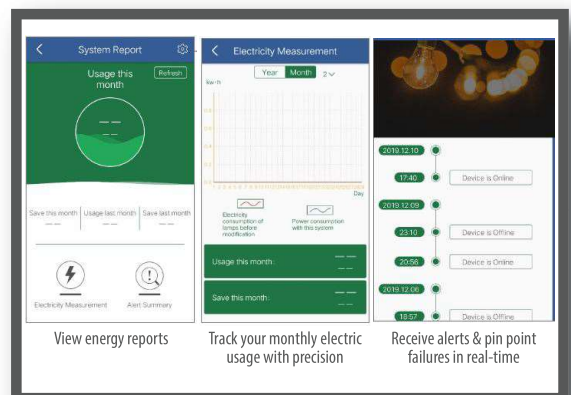
- Co-founder & CEO, MA based cultivator (ThinkLite Wachsen real customer)



## Out Perform the Sun

SMART non wi-fi based wireless controls powered by industry grade secure Bluetooth mesh technology comes standard. Ditch the wire-intensive dimming methods, as you Reach for New Heights. We believe Technology should simplify life, not complicate it. The Wachsen App puts full control on your finger tips, in a grower-inspired thoughtful simple user-friendly interface:

- Complete power and spectrum control
- Create schedules for each room
- Group racks with different strains in each room
- Gently coast from day to night & back with **customizable SUNRise™ and SUNSet™ settings**; cater to each plant without shocking them ON and OFF



# THERE'S MORE

## HERE IS THE CHERRY ON TOP

Without dimmable wires and demanding wi-fi needs, **installation cost and time per unit is the lowest in the industry.** Each fixture acts as a power source to the next, enabling significant savings with power running through the fixtures instead of running power directly to each fixture.

The Wachsen GrowLite is also UL & DLC Premium listed, eligible for utility incentives.

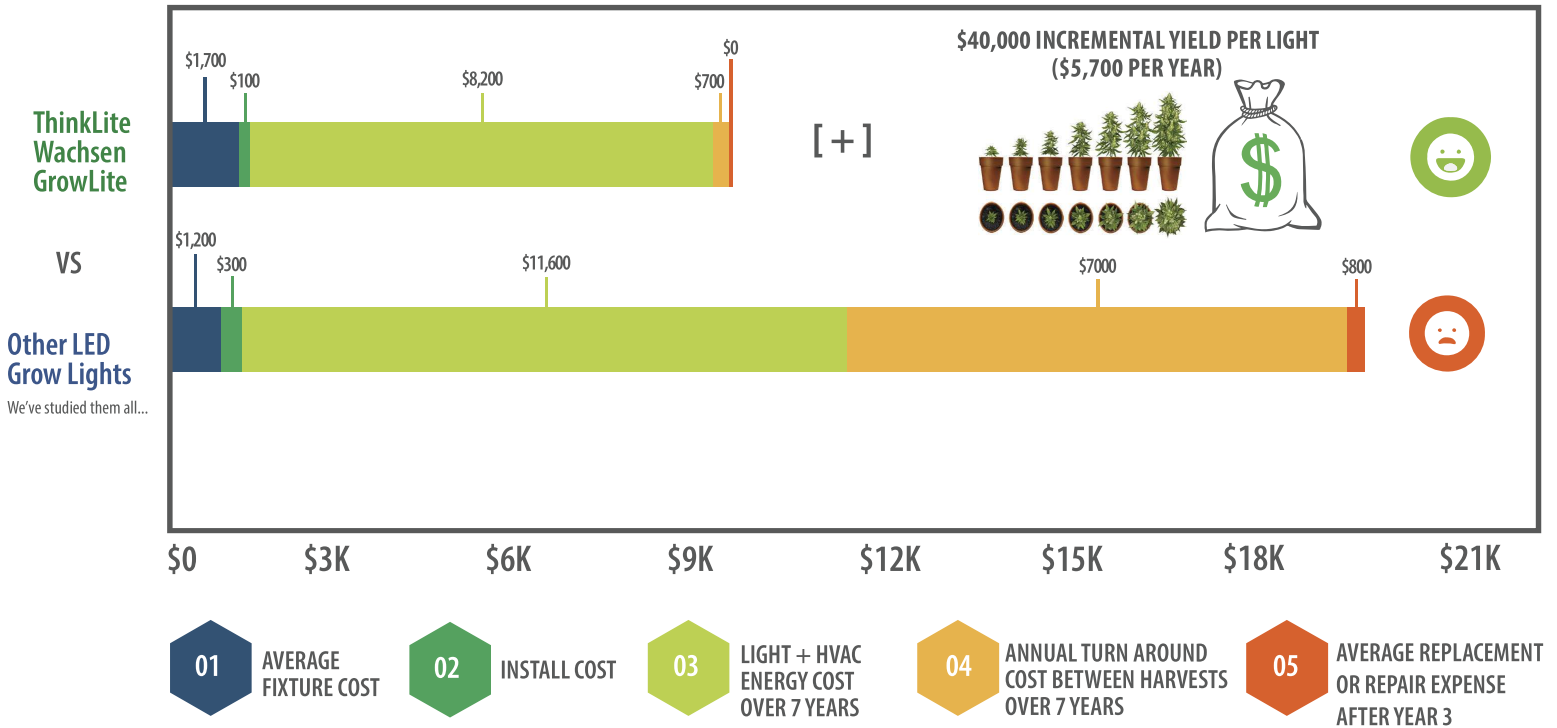
**// I have used every relevant light fixture in the last decade, and this is the culmination - I would absolutely stake my reputation on this light. It regularly stacks up to our HPS rooms in terms of g/sqft (65+), it's waterproof to the point my plant transfer crew can damn near pressure wash them in place, they dim wirelessly (it actually works), potential for a environmental sensor mesh network built in, I could go on and on.**

**As an operator, the peace of mind and longevity of these fixtures are worth every penny.**

Director of Cultivation, MA based cultivator  
Real Customer of ThinkLite Wachsen

# KNOW YOUR TRUE COST OF LIGHTING

## COST PER LIGHT OVER 7 YEARS



**THE FIXTURE COST IS JUST 6% OF THE EQUATION. THE INCREMENTAL YIELD PER PLANT IN YOUR FIRST YEAR WILL COVER THE FIXTURE COST 3X!**

*"The bitterness of poor quality remains long after the sweetness of low price is forgotten"- Benjamin Franklin*

### OUR PROMISE:

If you'd like a detailed side by side evaluation with any other grow light you are considering, we'll happily offer one at no charge. If we don't think we can add value to your Grow, we will be the first to tell you. **That's a promise!**

**ARE YOU READY TO REACH NEW HEIGHTS?**

# MAKING IT HAPPEN

## Financing Comes Standard

*Whether you're a startup or a multi-state operation, it can be difficult to scale your indoor grow. With banks being hesitant to touch the hemp or cannabis industry, it can be difficult to access the latest technology that can increase yields and consistency while cutting down on overhead expenses. At ThinkLite, we want to make sure that we can get our technology into the hands of those looking to Reach New Heights™.*

*That means industry-savvy financing for those who want to grow their businesses.*

## Utility Incentives Expertise

*You're busy. Your lights are expensive. Rebates are Huge (20-60% cash back rebates are possible), Rebates are complicated. We are the experts. We speak utility, and we speak recreate the wheel. Since 2011, ThinkLite has been participating in utility programs and energy policy development around lighting and ancillary energy use. We have the online calculators, print collateral, intake forms, program design, key inputs and years' of context and precedent to share with you.*

*We'll spare you the guesswork and hassle, ensure you understand the rules, get qualified and do it the right way.*



**\$1M - \$8M  
PROJECT SIZE**



**18 - 60  
MONTH TERMS**



**12% - 18%  
RATES**



**LIGHTING ONLY OR BUNDLE  
WITH HVAC & INSTALLATION**

## White Glove System Commissioning, always included

*We will be by your side when the lights come on, share best practices on setting up your controls and dashboards, and setting up your team to Reach New Heights™.*

## 7 Year World Class Global Warranty you can count on

*We did not pop up yesterday and we are not disappearing tomorrow. Customers around the globe like AT&T, Boeing, Honeywell, Engie, Dunkin' Brands, CBRE have been counting on us for over a decade. You know you can too.*



**KEY SOLUTIONS  
GROUP**  
116 1st Avenue, North,  
Suite D PO Box 94  
Altoona, IA 50009  
515-802-2761  
[info@ksg-corp.com](mailto:info@ksg-corp.com)